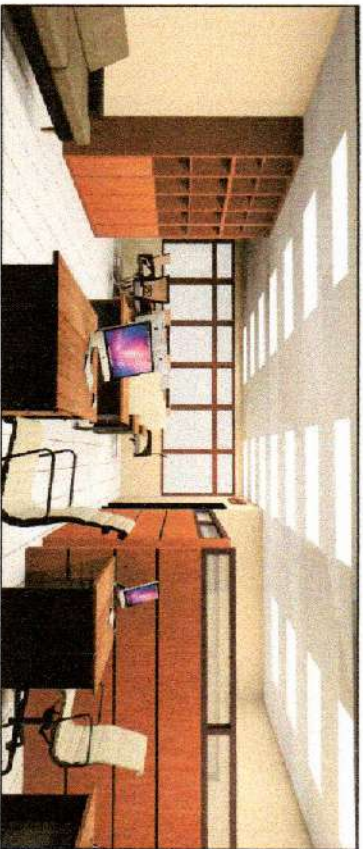



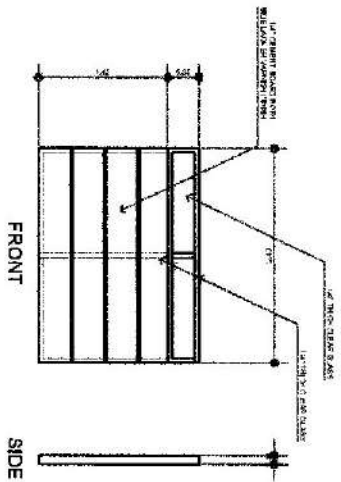


OFFICE OF THE EXECUTIVE DIRECTOR

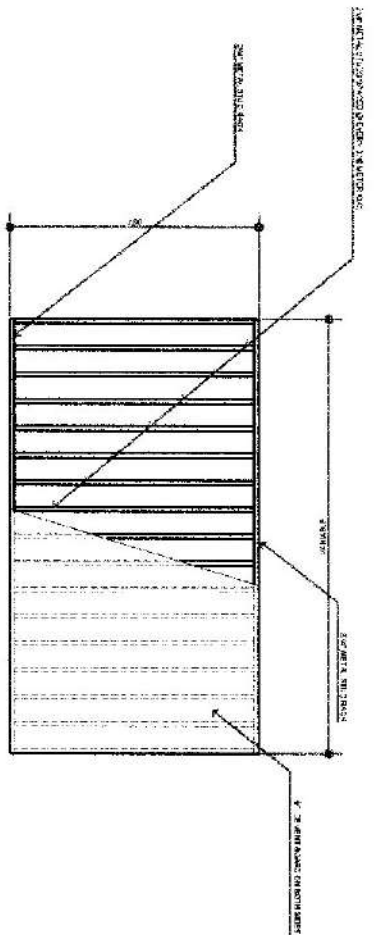


LEGAL DEPARTMENT
PERSPECTIVE VIEW

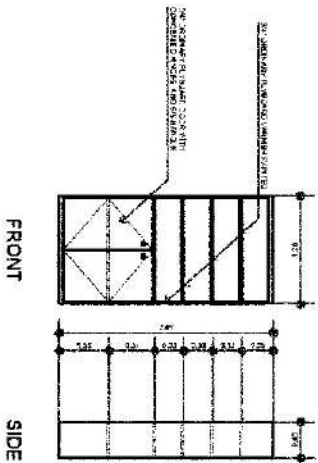
 ARCHITECT		PROJECT NO. 1000-POL-011000 PROPOSED REPAIR AND IMPROVEMENT OF DANGEROUS DRUG BOARD OFFICE (DDBB)		CLIENT REPUBLIC OF THE PHILIPPINES DANGEROUS DRUGS BOARD		NO. OF SHEETS 1	
PROJECT NO. 1000-POL-011000	SHEET NO. 1	DATE 10/20/20	SCALE AS SHOWN	DRAWN BY [Name]	CHECKED BY [Name]	APPROVED BY [Name]	DATE 10/20/20



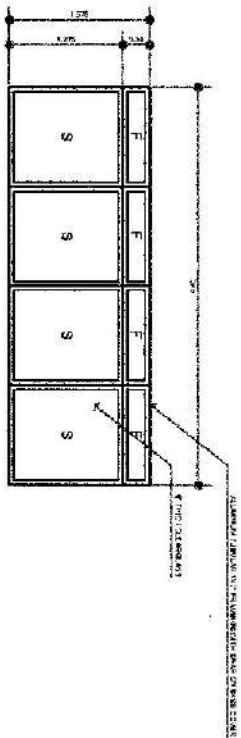
LOW PARTITION DRY WALL DETAILS
SCALE: 1:30 METERS



DRY WALL DETAILS
SCALE: 1:30 METERS



TYPICAL DETAILS OF FILLING CABINETS
SCALE: 1:30 METERS



TYPICAL DETAILS OF ALUMINUM SLIDING WINDOWS
SCALE: 1:30 METERS

 ROLDANDO CIRION Civil Engineer PROFESSIONAL ENGINEER (REG. NO. 10000)	PROJECT:	CLIENT:	NO. SHEET:	CONTENTS:	SHEET NO.
	PROPOSED REPAIR AND IMPROVEMENT OF DANGEROUS DRUG BOARD OFFICE (DRBO)	REPUBLIC OF THE PHILIPPINES DANGEROUS DRUGS BOARD		AS SHOWN	3

