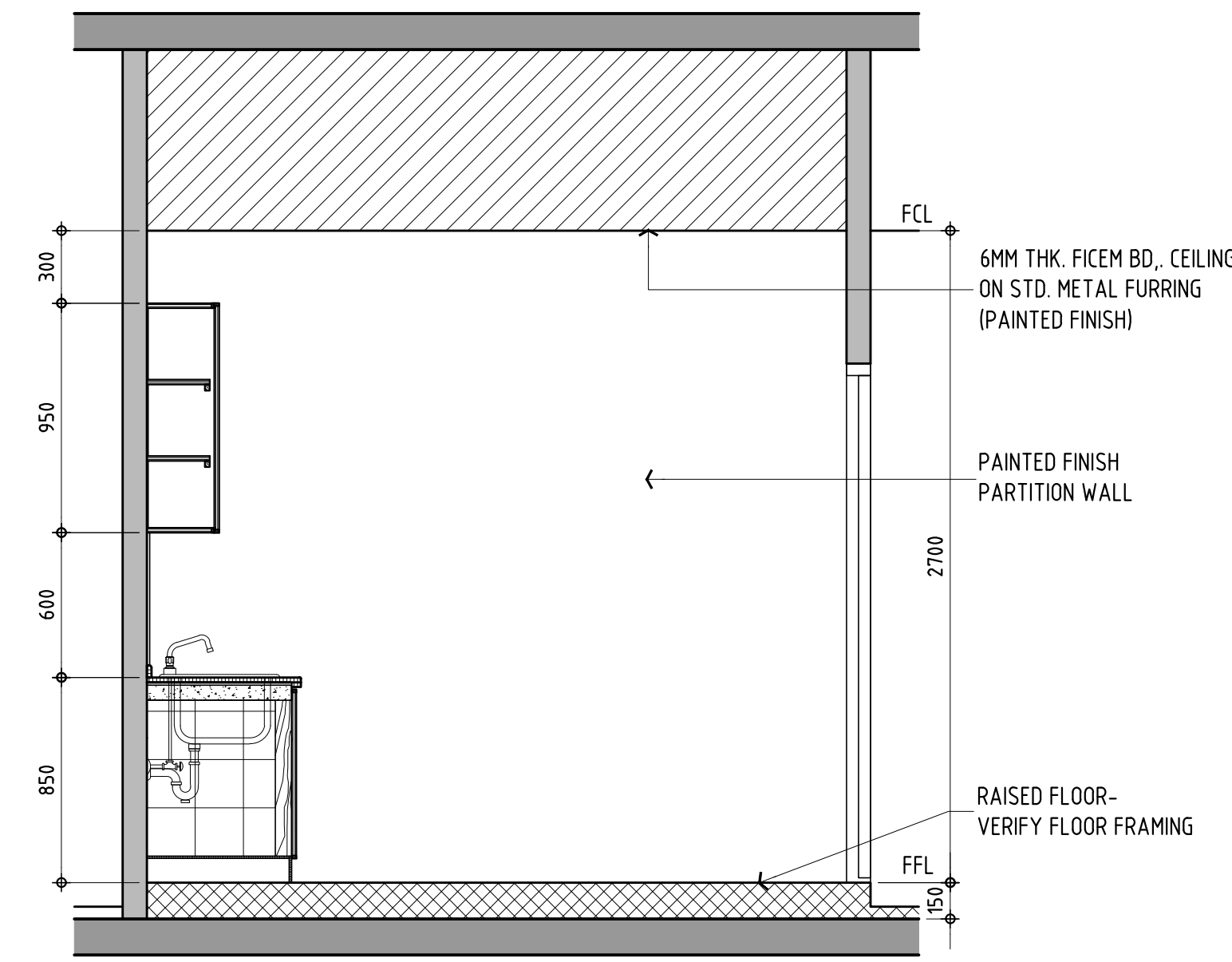
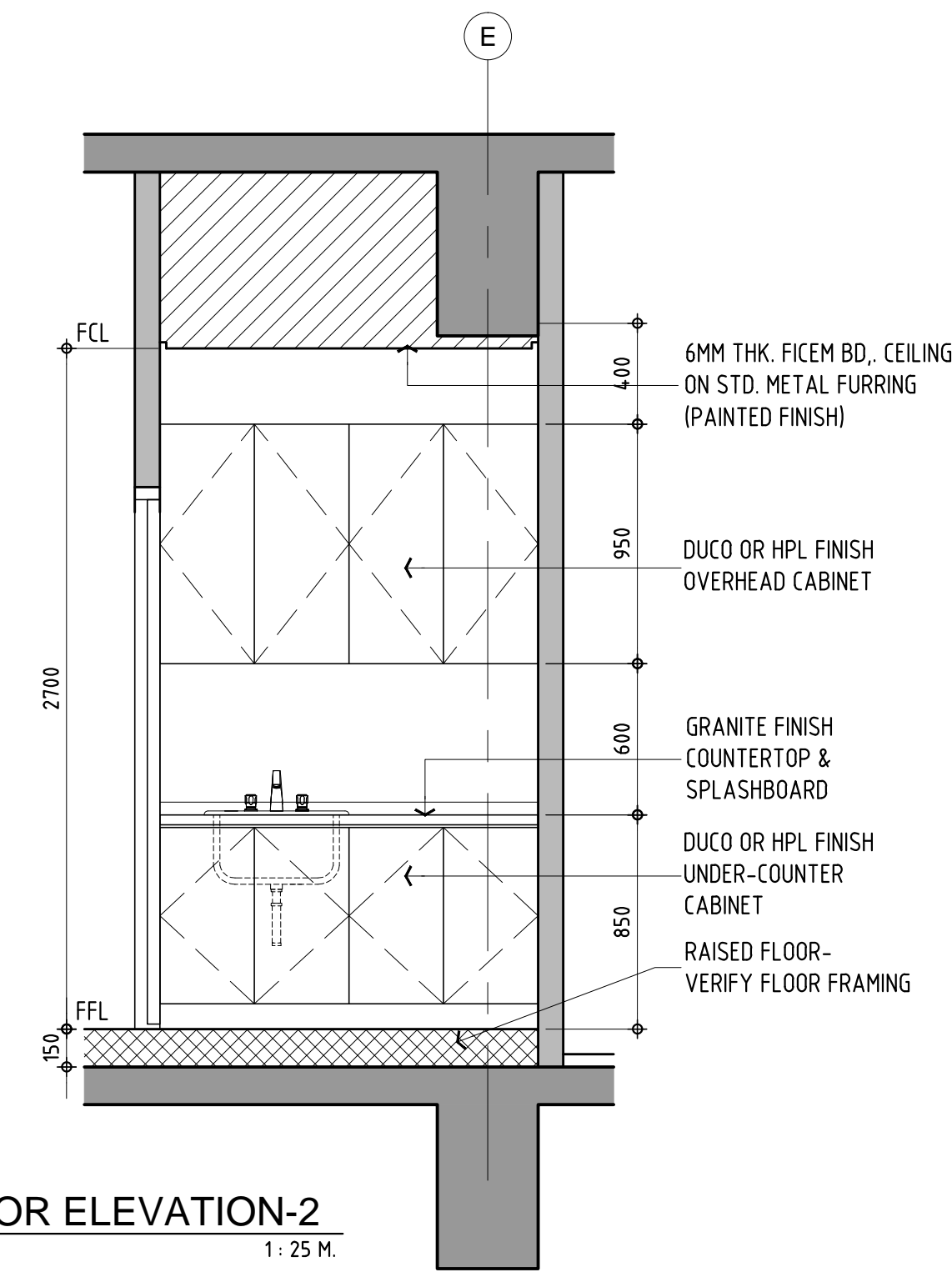


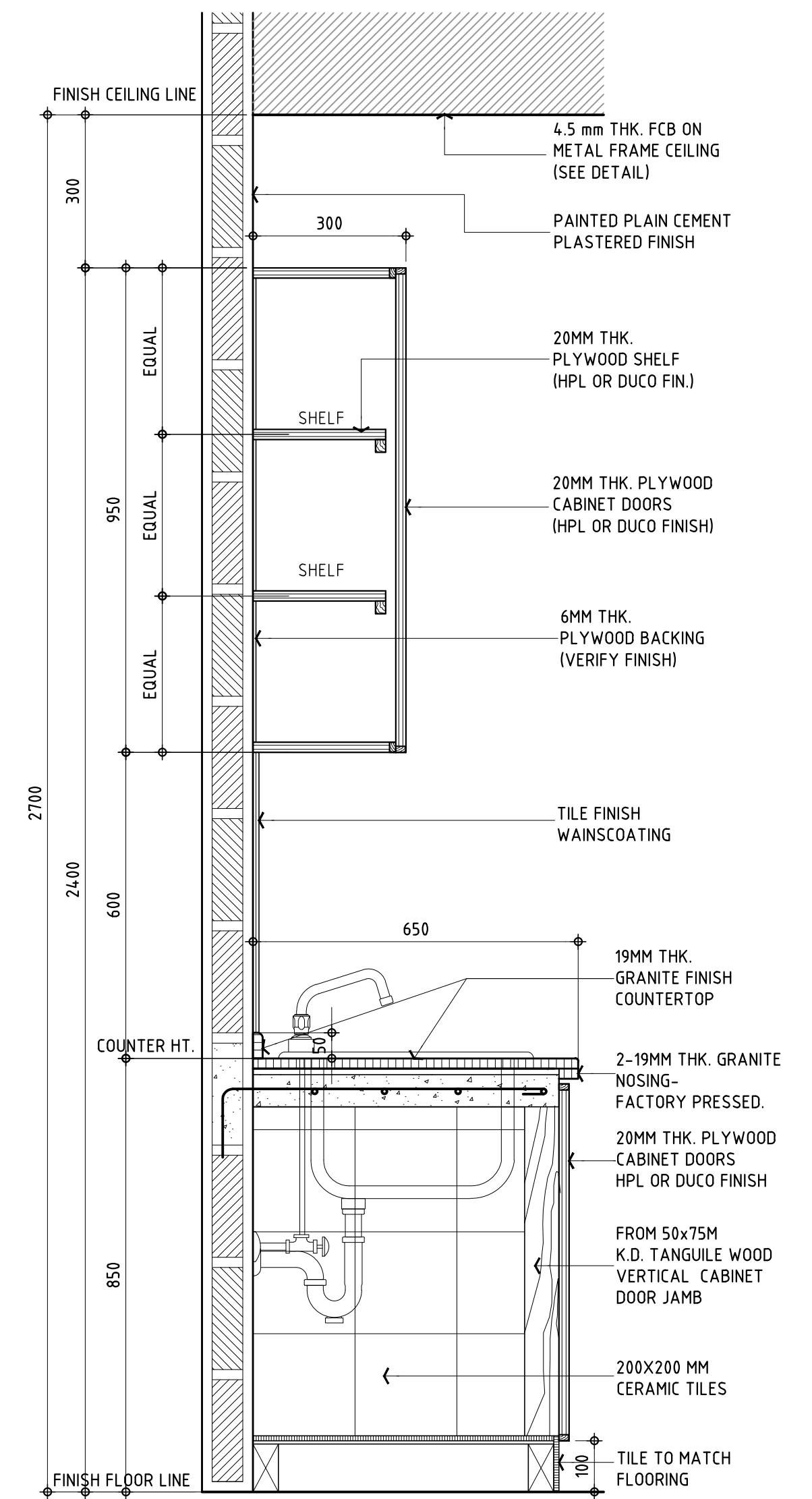
**1 PANTRY @ CONFERENCE ROOM**  
SCALE: 1:25 M.



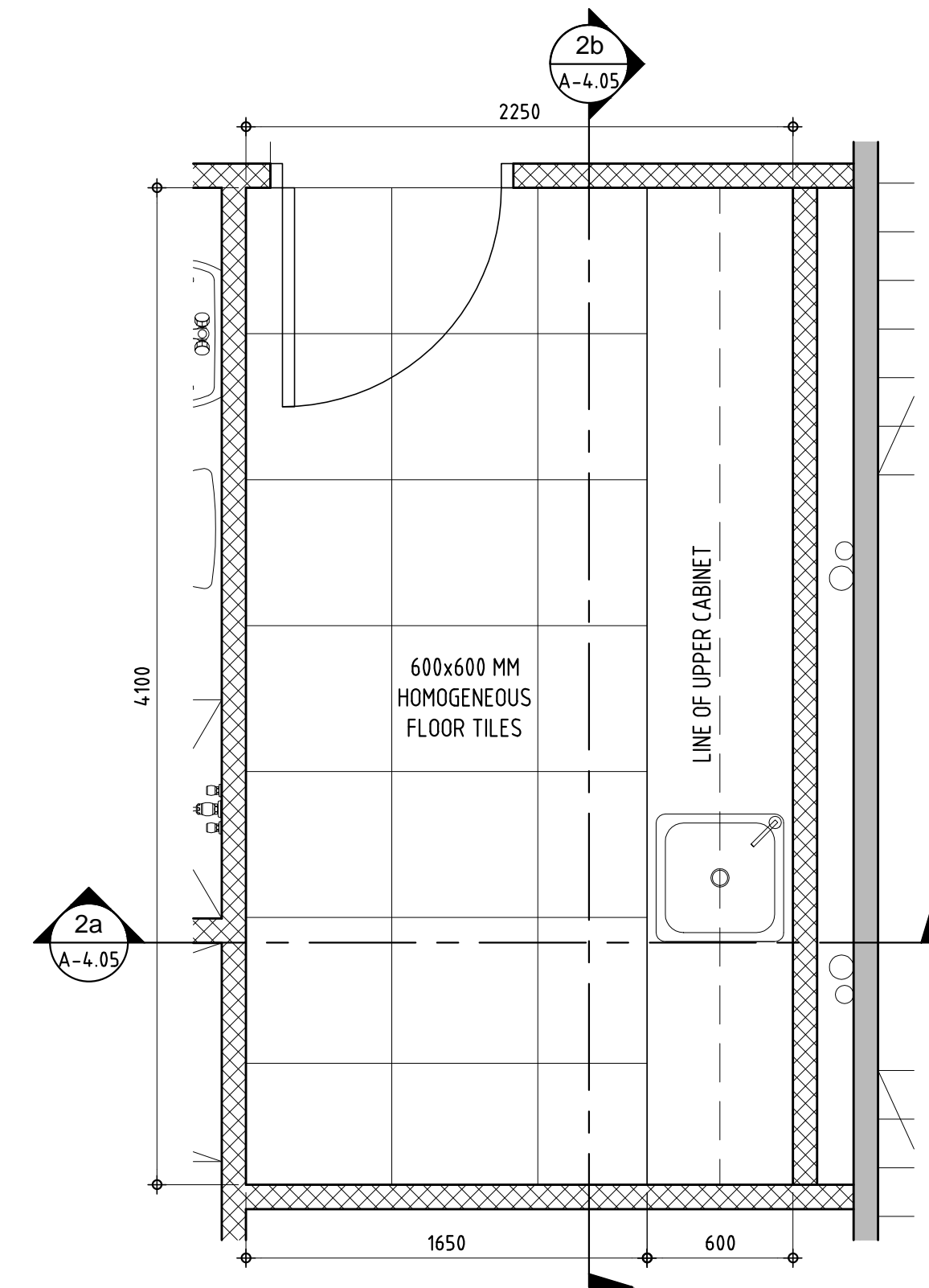
**1a INTERIOR ELEVATION-1**  
SCALE: 1:25 M.



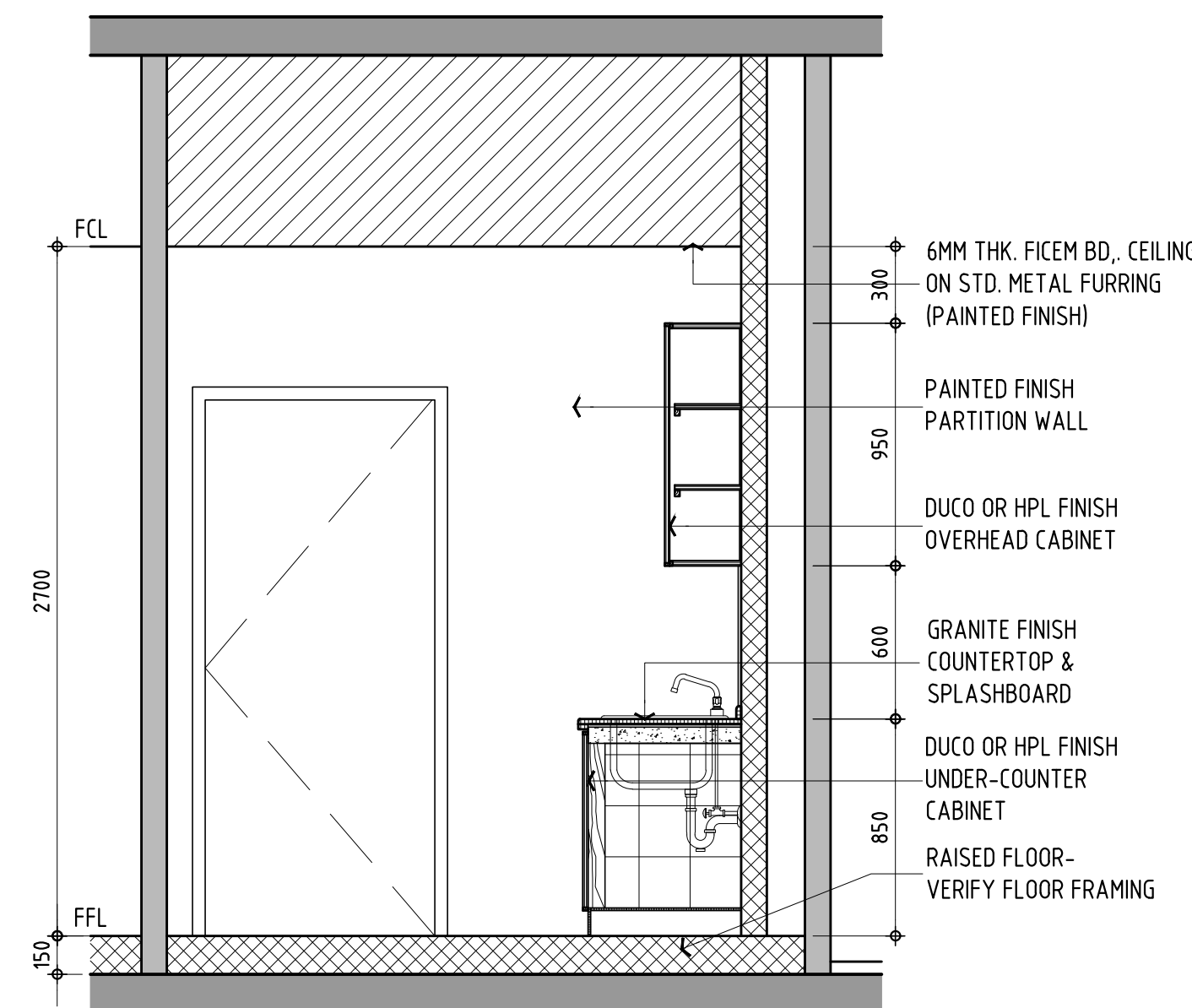
**1b INTERIOR ELEVATION-2**  
SCALE: 1:25 M.



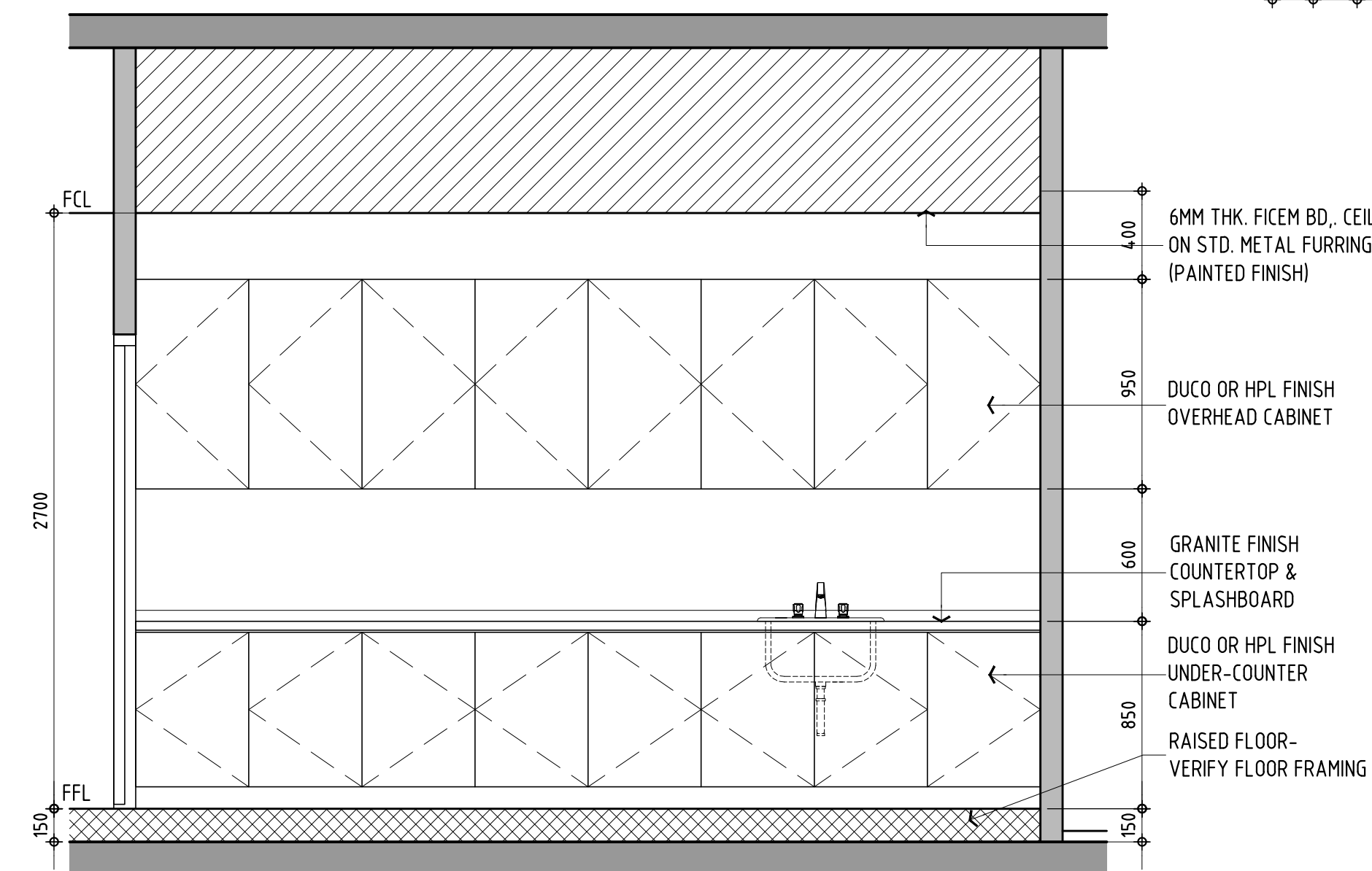
**3 TYPICAL COUNTER DETAILS**  
SCALE: 1:10 M.



**2 PANTRY ROOM PLAN**  
SCALE: 1:25 M.



**2a INTERIOR ELEVATION-1**  
SCALE: 1:25 M.



**2b INTERIOR ELEVATION-2**  
SCALE: 1:25 M.

**NOTE::**  
ALL TOILETS SHALL BE RAISED FLOOR.

<p>REPUBLIC OF THE PHILIPPINES DANGEROUS DRUGS BOARD <b>OFFICE OF THE PRESIDENT</b> DILIMAN QUEZON CITY</p>	<p>PROJECT &amp; LOCATION <b>PROPOSED DANGEROUS DRUGS BOARD EXTENSION OFFICE</b> SOUTH INSULA CONDOMINIUM COMPLEX, TIMOG AVE., DILIMAN, SOUTH TRIANGLE, QUEZON CITY</p>	<p>SHEET CONTENTS: PANTRY @ CONFERENCE ROOM PANTRY ROOM PANTRY COUNTER DETAILS</p>	<p>SUBMITTED BY:  <b>VICTOR S. ADRIANO</b> PRC 18802 PRESIDENT/GEN. MANAGER</p>	<p>DESIGNED BY: <b>JUAN CARLO S. GERVASIO II</b> ARCHITECT PRC - 17811 PTR - 7363158 01-16-19 MAKATI CITY</p>	<p>APPROVED BY: <b>EARL P. SAAVEDRA</b> MPA 9 - EXECUTIVE DIRECTOR DATE:</p>	<p>PROJ. NO. GA 2019 08</p>	<p>SHEET NO. <b>A-4.05</b></p>